



CHICKASAW
RETREAT & CONFERENCE CENTER

Wedding Guide



TABLE OF CONTENTS

Introduction & Staff Information.....1

Function Space Overview.....2

Indoor Venues.....3-6

Outdoor Venues7

Wedding Package.....8

FAQ's.....9

Save the Date.....10

CONGRATULATIONS ON YOUR ENGAGEMENT!

Thank you for your interest in the Chickasaw Retreat and Conference Center. We are eager to show you all of our wedding options that we have to offer.

The Chickasaw Retreat and Conference Center is ideal for weddings, receptions, and rehearsal dinners due to its stunning and secluded setting amongst the majestic Arbuckle Lake & Mountains. Our accommodations include 43 guest rooms which all have breathtaking views overlooking the Arbuckle Lake or Arbuckle Mountains.

The Retreat Center is a 100,000 square foot facility that sits atop 1,750 beautiful acres in Sulphur, Oklahoma. With multiple ceremony locations to choose from, we are certain that the Chickasaw Retreat and Conference Center is your ideal wedding venue, whether you're planning for rustic charm or natural elegance. For a more

intimate affair, consider a fireside ceremony in the Great Room. If you'd rather have a more theatrical production, consider our indoor amphitheater with views of the lake and mountains. Amongst our multiple ceremony sites, we have several other options for reception sites and rehearsal dinners. Celebrate your happy day with a finely catered meal. Select a location – indoors or out – on our grounds and build a custom menu for your guests with our Event Concierge. We can accommodate intimate dining experiences for as few as twelve guests, or elegant banquets for parties of up to 200.

Our sales and catering staff are here to help make your special day perfect. We encourage you to call for an appointment to ensure the best service possible. We can arrange a tour and/ or meeting with one of our sales professionals to help you make this important decision. We look forward to talking with you soon.

STAFF INFORMATION

Sales Managers
Twyla.Johnson@chickasaw.net
Allen.Fox@chickasaw.net
CRCCSales@chickasaw.net

Call us today at 580-622-8117

FUNCTION SPACE OVERVIEW

Room	Sq Ft	Dimensions	Height	Banquet	Theater	Reception	Classroom	U-Shape
Meeting Room 1	990	30'x33'	10'	60	65	65	48	27
Meeting Room 2	1260	42'x30'	10'	70	80	80	55	33
Meeting Room 3	648	24'x27'	10'	30	40	40	27	21
Full Meeting	2898	66'x43'	10'	180	180	180	108	45
Great Room	1600	41'x41'	15'	140	155	155	60	45
Board Room	136	16'x16'	12'			12		
Amphitheater	1056	41'x44'	12'			124		

INDOOR VENUES

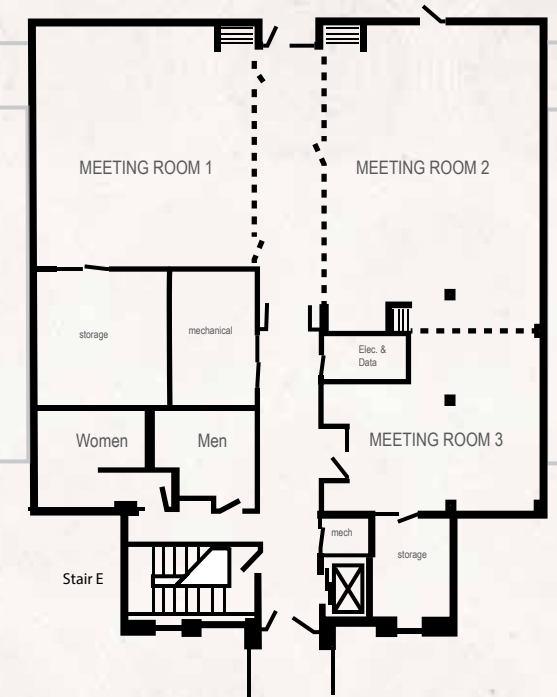


©JCJ Graphics

THE FULL MEETING ROOMS

The Banquet Hall is ideal for rehearsal dinners, ceremonies, and receptions. This room has the ability to divide into three sections; FULL MEETING ROOMS 1, 2, and 3.

BANQUET HALL



MEETING ROOM 1
This room is ideal for rehearsal dinners and receptions.



MEETING ROOM 2
This room is ideal for rehearsal dinners and receptions.



MEETING ROOM 3
This room is ideal for rehearsal dinners.

THE GREAT ROOM

The Great Room is ideal for an intimate ceremony or reception.



THE AMPHITHEATER

The Amphitheater is ideal for ceremonies.



THE GREAT ROOM



OUTDOOR VENUES



©JCY Graphics

THE COURTYARD

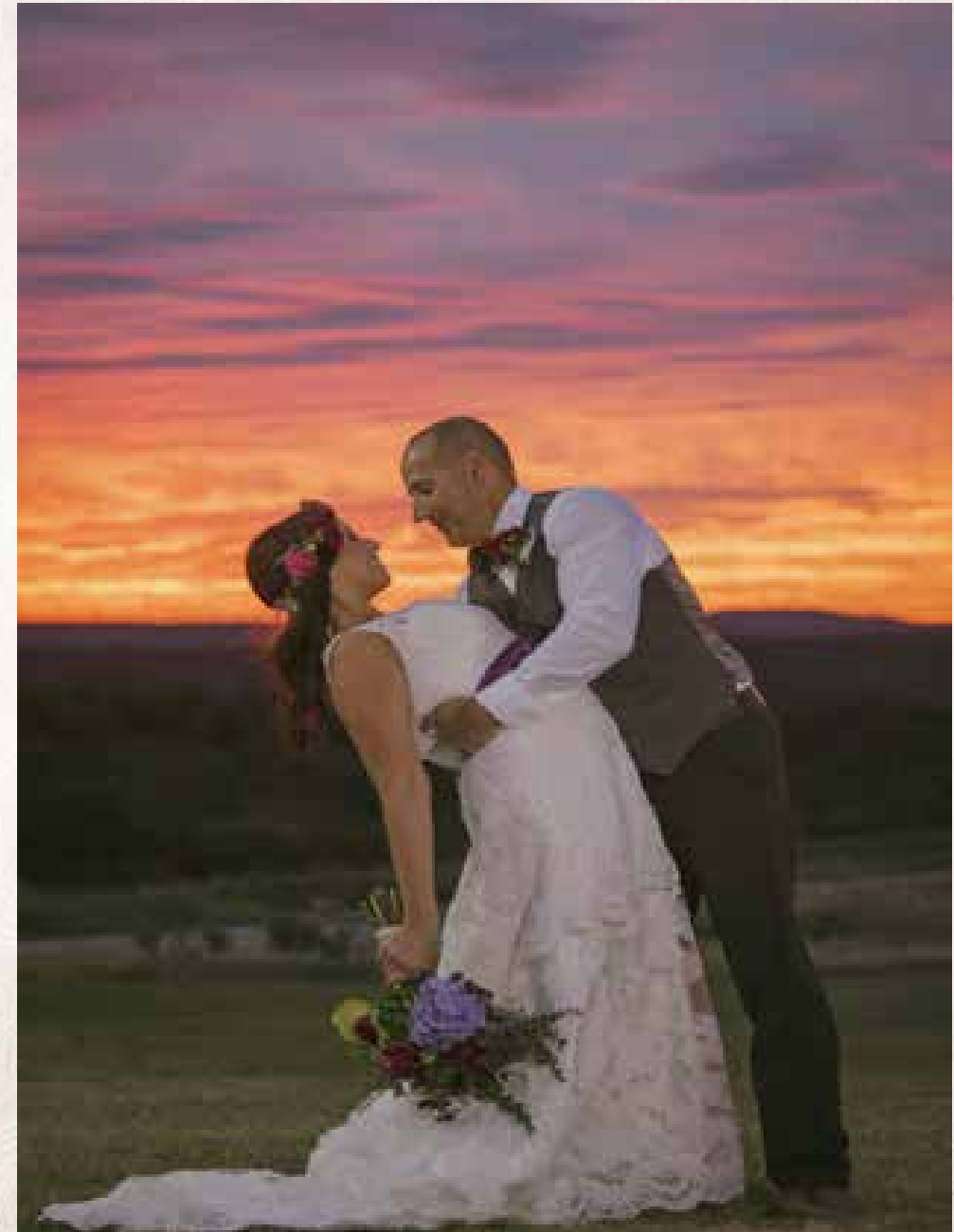
The Courtyard is a beautiful setting which allows for magnificent mountain and lake views.



©JCY Graphics

THE LAKESIDE

This intimate setting is like no other.
This is a perfect selection if you are looking for a private lake view.



©Trey Daugherty Photography

THE MOUNTAIN VIEW

This setting is a breathtaking selection with unbelievable views of the Arbuckle Mountains.

WEDDING PACKAGE

CEREMONY

- Indoor or Outdoor Ceremony Site
- 12 hour use of facility on wedding date
- Up to 250 garden chairs or conference chairs depending on venue

RECEPTION

- Tables & chairs provided by facility
- Set up and tear down by CRCC Staff,(excluding decorations)
- Selection of black or white 100% polyester linens
- Black, 100% polyester skirting
- Audio Visual Capabilities (Depending on Venue)
- 12 x 12 Dance Floor

PLANNING

- Sales Manager will help you plan your special day
- 1 hour Ceremony Rehearsal prior to wedding date (by appointment)

ENHANCEMENTS

- Up to 43 hotel rooms for wedding guests
- Special lodging rates
- Bar service
- On site catering by preferred vendor

FREQUENTLY ASKED QUESTIONS

How many guests can I have?

We have outdoor space that can accommodate up to 250 guests and indoor space can accommodate up to 200 guests.

What if my ceremony is scheduled outside and it's raining?

We have an alternate indoor location in the Amphitheatre that can accommodate 150 people max for a ceremony.

Do we get a discount if we are a Chickasaw citizen or employee?

We allow a 5% discount off of packages for Chickasaw citizens and employees.

What can we use for the Bride & Groom's exit?

We allow sparklers, bubbles, glow sticks, flower petals, and bird seed (lawn area only.) Confetti, rice, and glitter are prohibited.

Where can we have our rehearsal dinner?

We have locations that can accommodate up to 200 guests. Please contact our sales team for further details.

When can we begin decorating?

Based on availability, you can begin decorating anytime within your 12 hour window.

What can we use to decorate?

We prohibit all open flame decorations, glitter, and any hanging that would require nails or screws.

Can we bring in alcohol?

Please contact our sales team for further details.

When must my wedding package be paid in full?

Your wedding package must be paid in full 30 days prior to your event.

Is there a place to store our cake and flowers the day prior to our wedding?

Yes, the CRCC will provide access to a walk-in cooler to store any items you may have.

PLEASE CONTACT OUR SALES STAFF FOR PACKAGE PRICING.

Sales Managers
Twyla.Johnson@chickasaw.net
Allen.Fox@chickasaw.net
CRCCSales@chickasaw.net

Call us today at 580-622-8117

SAVE THE DATE

When calling to make a reservation, please provide the following information:

- Wedding Party Name
- Contact Information
- Date of Event
- Estimated Beginning Time of Event
- Preferred Choice of Location
- Number and Type of Guest Rooms to be Blocked
- Approximate Guest Count
- Style of Event

Method of payment must be established at time of booking.

We require signed copies of the booking agreement to secure the function space for your event.



©JCJ Graphics

4205 GODDARD YOUTH CAMP ROAD | SULPHUR, OK | 73086
PHONE: 580-622-8117 | FAX: 580-622-8015
CRCCSALES@CHICKASAW.NET
WWW.CHICKASAWRETREAT.COM